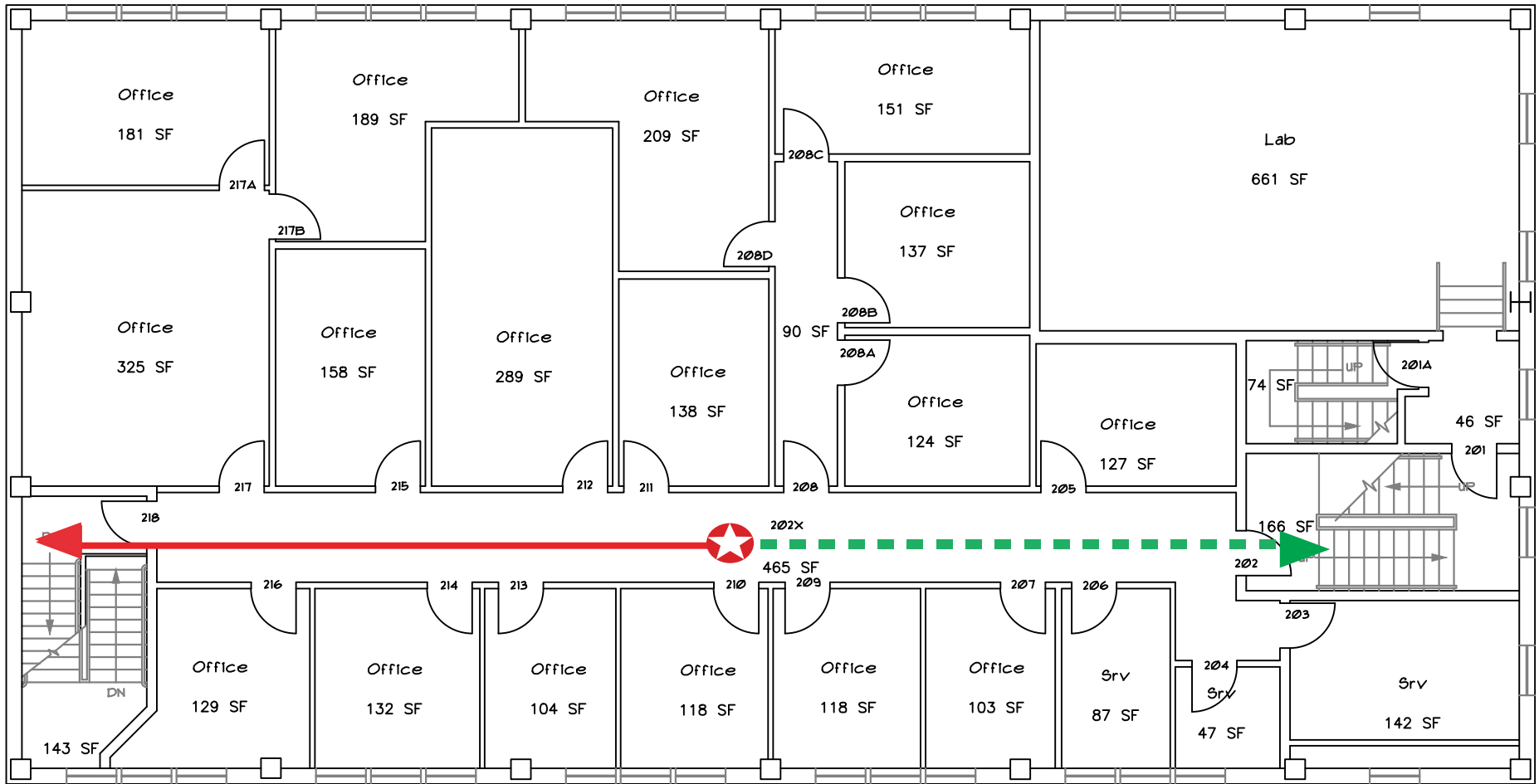


For severe weather, seek shelter in the first floor interior hallway, away from windows and doors.
 For fire alarm activation, evacuate immediately and assemble near Stinson Drive.







BUREAU OF MINES

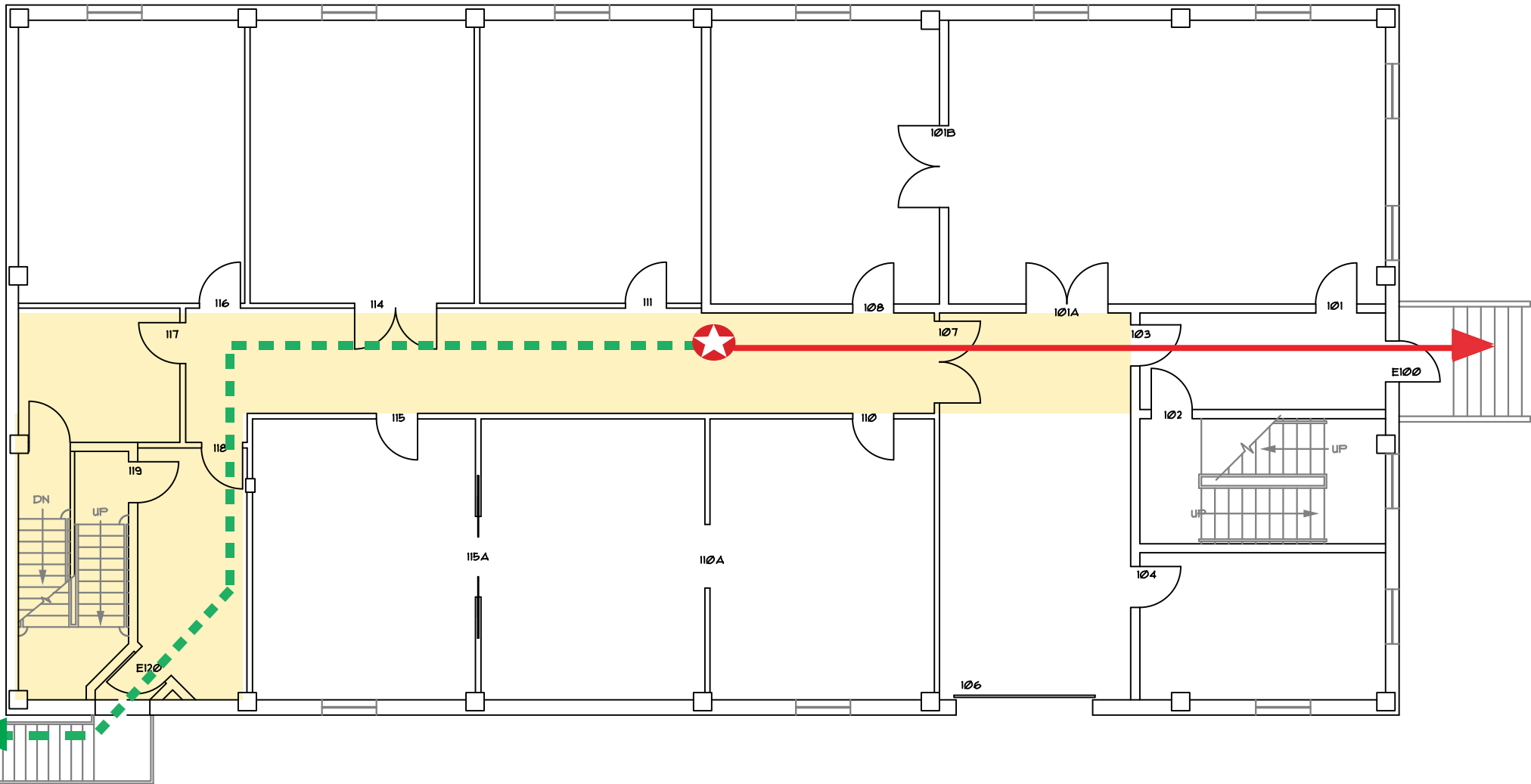
SECOND FLOOR



EVACUATION ROUTE

KEY

-  YOU ARE HERE
-  PRIMARY EXIT ROUTE
-  SECONDARY EXIT ROUTE
-  SEVERE WEATHER SHELTER AREA




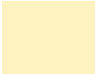


BUREAU OF MINES

FIRST FLOOR



EVACUATION ROUTE

| KEY | |
|---|-----------------------------|
|  | YOU ARE HERE |
|  | PRIMARY EXIT ROUTE |
|  | SECONDARY EXIT ROUTE |
|  | SEVERE WEATHER SHELTER AREA |

